

When Your Client Receives the .SBF File

.SBF files are easy to load into Summation. Your client simply drags and drops the .SBF file into the **Transcripts** subdirectory of the Summation **Case Explorer**, as illustrated in the following figure.

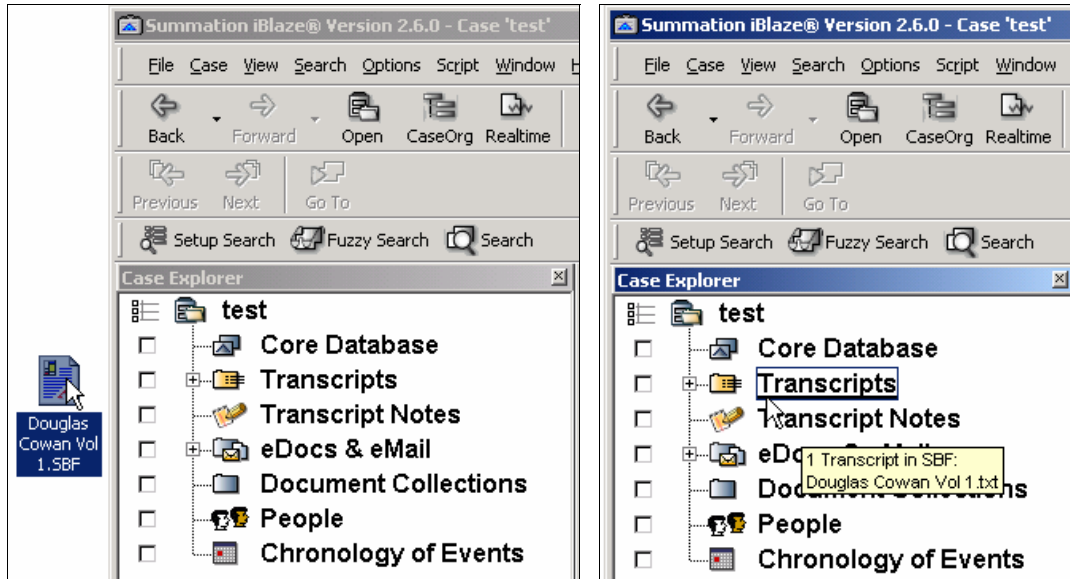


Figure 23: Drag the .SBF File into Summation and Drop It into the Transcripts Subdirectory

A series of screens walks your client through the loading and updating process. When your client clicks on an exhibit alias in the transcript text, the exhibit image is displayed in tandem with the transcript testimony, as shown in Figure 24.

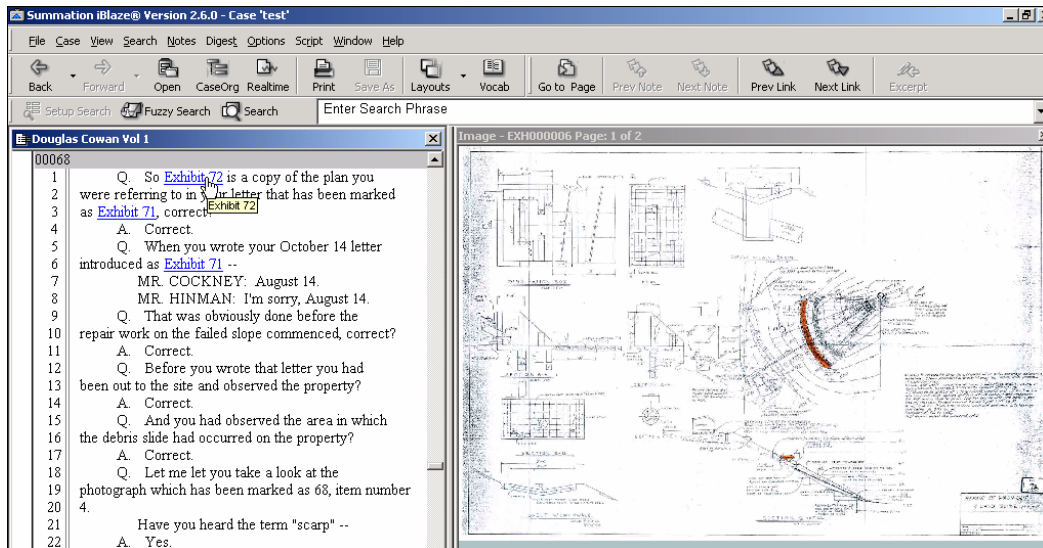


Figure 24: Transcript Text and Exhibit Image in Summation

In addition, information about each exhibit is automatically entered into five fields within the Summation **Core Database**, saving valuable time for your client:

- **DocID** – Contains an **EXH** prefix and consecutive numbering (such as **EXH0000023**).
- **DocType** – Contains the exhibit's name as **Exhibit for <transcript name>**.

- **DepoIDs** – Contains the page and line number of all places where the exhibit is linked within a transcript.
- **DepExh#** – Contains the assigned aliases for the exhibit.
- **DocLink** – Holds the link/path to the image of the exhibit.

The following image illustrates the information that is added to the **Core Database**.

Column E-table Display: Summary 1 of 8					
Fields	Docid	Doctype	Depoids	Depexh#	Doclink
1	EXH000001	Exhibit for Douglas Cowan Vol 1.txt	Douglas Cowan Vol 1 79 : 5 79 : 16 79 : 17 81 : 2 82 : 2 83 : 24 84 : 2 89 : 2	Exhibit 3	C:\PROGRAM FILES\SUMMATION\BLAZE\CASEDATA\TEST\TRAN\Aux\Douglas Cowan Vol 1.txt\Exhibits\Exhibit 3.tif
2	EXH000002	Exhibit for Douglas Cowan Vol 1.txt	Douglas Cowan Vol 1 81 : 8 82 : 22 84 : 16 85 : 12	Exhibit 51	C:\PROGRAM FILES\SUMMATION\BLAZE\CASEDATA\TEST\TRAN\Aux\Douglas Cowan Vol 1.txt\Exhibits\Exhibit 51.jpg
3	EXH000003	Exhibit for Douglas Cowan Vol 1.txt	Douglas Cowan Vol 1 19 : 5 19 : 8 19 : 12 21 : 2 21 : 3 34 : 5 34 : 8	exhibit 58	C:\PROGRAM FILES\SUMMATION\BLAZE\CASEDATA\TEST\TRAN\Aux\Douglas Cowan Vol 1.txt\Exhibits\Exhibit 58.tif
4	EXH000004	Exhibit for Douglas Cowan Vol 1.txt	Douglas Cowan Vol 1 69 : 25	Exhibit 59-F	C:\PROGRAM FILES\SUMMATION\BLAZE\CASEDATA\TEST\TRAN\Aux\Douglas Cowan Vol 1.txt\Exhibits\Exhibit 59-F.jpg
5	EXH000005	Exhibit for Douglas Cowan Vol 1.txt	Douglas Cowan Vol 1 66 : 13 68 : 3 68 : 6	Exhibit 71	C:\PROGRAM FILES\SUMMATION\BLAZE\CASEDATA\TEST\TRAN\Aux\Douglas Cowan Vol 1.txt\Exhibits\Exhibit 71.pdf
	EXH000006	Exhibit for Douglas Cowan Vol 1.txt	Douglas Cowan Vol 1 67 : 10 67 : 13 68 : 1	Exhibit 72	C:\PROGRAM FILES\SUMMATION\BLAZE\CASEDATA\TEST\TRAN\Aux\Douglas Cowan Vol 1.txt\Exhibits\Exhibit 72.pdf

Figure 25: Summation's Core Database, Showing Fields Automatically Filled in When Exhibits Are Loaded with an .SBF File

Your client can add additional text, issue codes, and so forth and can search through Summation's **Core Database** for information contained in any of these fields.